

Inclusive Walk / Move Audits: A Tool for Mobility Access and Systems Change

Opening Reminders

This webinar is being recorded to archive the conversation.

The archive and all the slides used will be available in the coming weeks.

- The archive and the materials will be provided in English and Spanish

Language Access

- Spanish interpretation
- American Sign Language (ASL) interpretation
- CART captioning in English and Spanish

Language Access

To listen to the interpreting:

- Click the globe icon or on the 3 dots / “more”, “Interpretation.”
- Choose your language channel.
 - If you are using a phone or tablet, click “done.”

If you can't hear the interpreter on your channel, please ask for help in the chat.

Language Access

To access the English CART captions:

- Click the button at the bottom of the screen with the “CC” icon to start captions.

To access the Spanish CART captions:

- Click the link in chat.

Language Access

If you cannot access the chat feature, please let us know via email at priya@disasterstrategies.org.

Language Access

The ASL interpreters are already spotlighted.

To adjust the size of the slides and Zoom boxes in Zoom:

- Drag the divider that separates the speakers/interpreters from the slides.

Reminders for this Webinar

- Put your questions in the Q&A box.
- For technical assistance or to alert us to an issue, type in chat/raise hand.
- If the chat is not accessible to you, please email your questions to priya@disasterstrategies.org

Welcoming Remarks

Meg Ann Traci, PhD

University of Montana Rural Institute for Inclusive Communities

<https://www.umt.edu/rural-institute/>

Welcoming Remarks

Laura Hamasaka

National Network of Public Health Institutes

www.nnphi.org

Acknowledgement

This webinar is supported by the Public Health Institute with funding from the Centers for Disease Control and Prevention of the U.S. Department of Health and Human Services (HHS) as part of a financial assistance award funded by CDC/HHS.

The contents are those of the author(s) and do not necessarily represent the official views of, nor an endorsement, by CDC/HHS, or the U.S. Government.

The views and opinions expressed by guest speakers are their own.

OT21-2103 (COVID)

- **Strategy 1:** Expand existing and/or develop new mitigation and prevention resources and services to reduce COVID-19-related disparities among populations at higher risk and that are underserved.
- **Strategy 2:** Increase/improve data collection and reporting for populations experiencing a disproportionate burden of COVID-19 infection, severe illness, and death to guide the response to the COVID-19 pandemic.

OT21-2103 (COVID)

- **Strategy 3:** Build, leverage, and expand infrastructure support for COVID-19 prevention and control among populations that are at higher risk and underserved.
- **Strategy 4:** Mobilize partners and collaborators to address...health disparities among populations at higher risk and that are underserved.

Thank you!

National Network of Public Health Institutes

- Amanda Franklin
- Ajayi Pickering-Haynes
- Maya Wright

National Association of County and City Health Officials

- Bianca Lawrence
- Olivia Turay

Today's Moderator

Karin Korb

Inclusive Walk / Move Audits: A Tool for Mobility Access and Systems Change

Charles T. Brown, MPA, CPD, LCI

Founder & CEO

Horizon 54

www.horizon54.com

Presentation Design



What is an I2 Walk/Move Audit?



From ADA Compliance to Whole-Community Design



The I2 Audit Cycle: From Observation to Action



What makes it “systems change” is not the walk. It is what changes afterward.



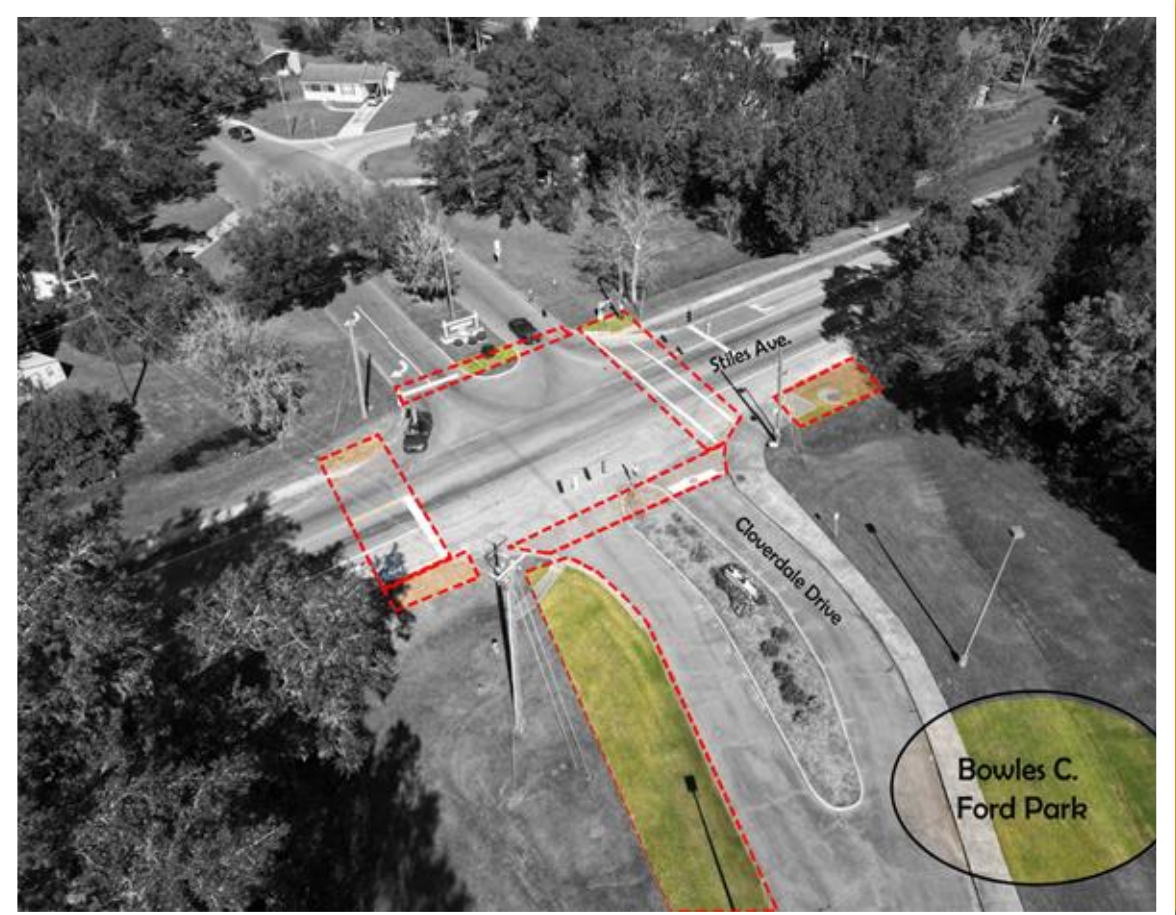
Virginia Walkability/Mobility Action Institute



Virginia Walkability/Mobility Action Institute



Equitable Access To Six Savannah (GA) Parks



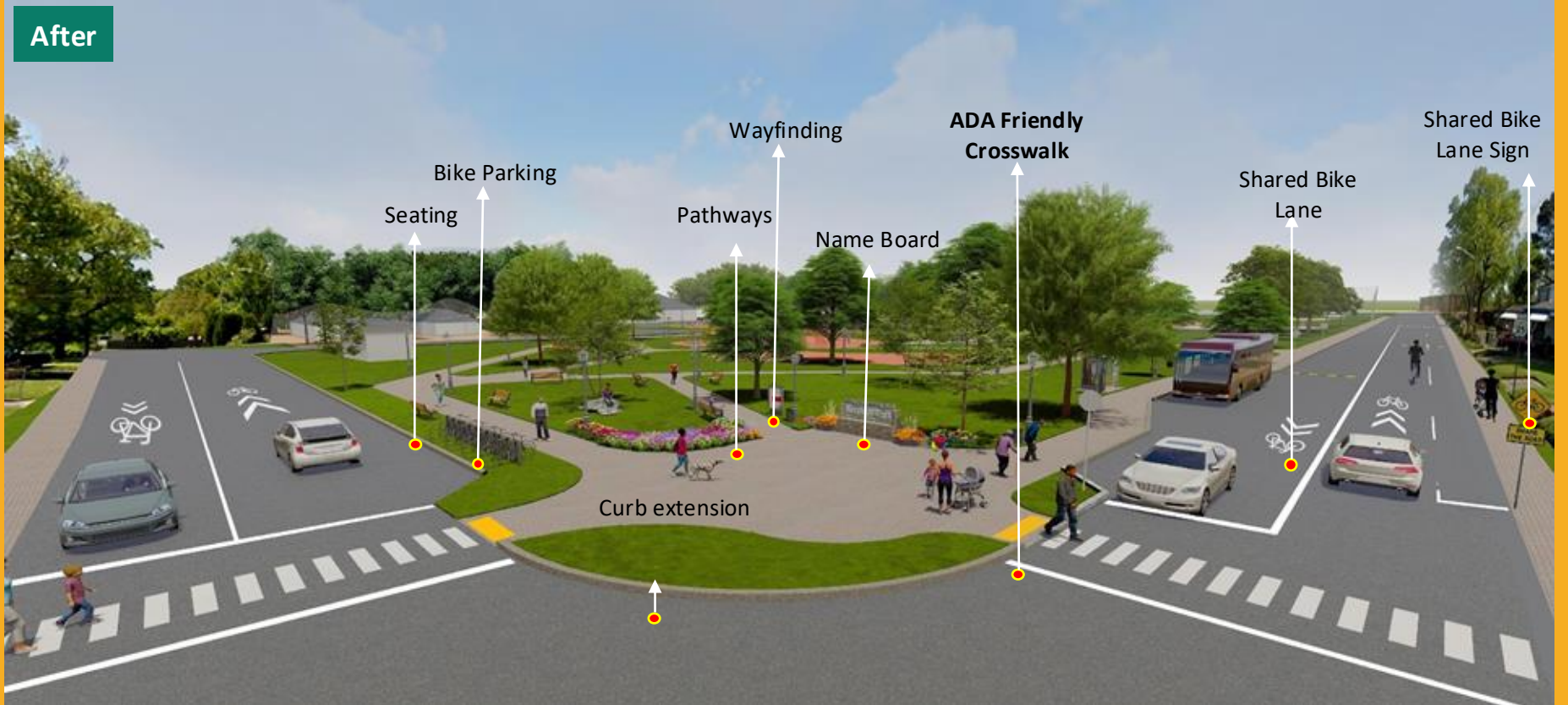
Key Map



Before



After



Park Entrance Redesign



Key Map



Before



Community Center and Connectivity with the Park



Vermont Healthy Communities Project



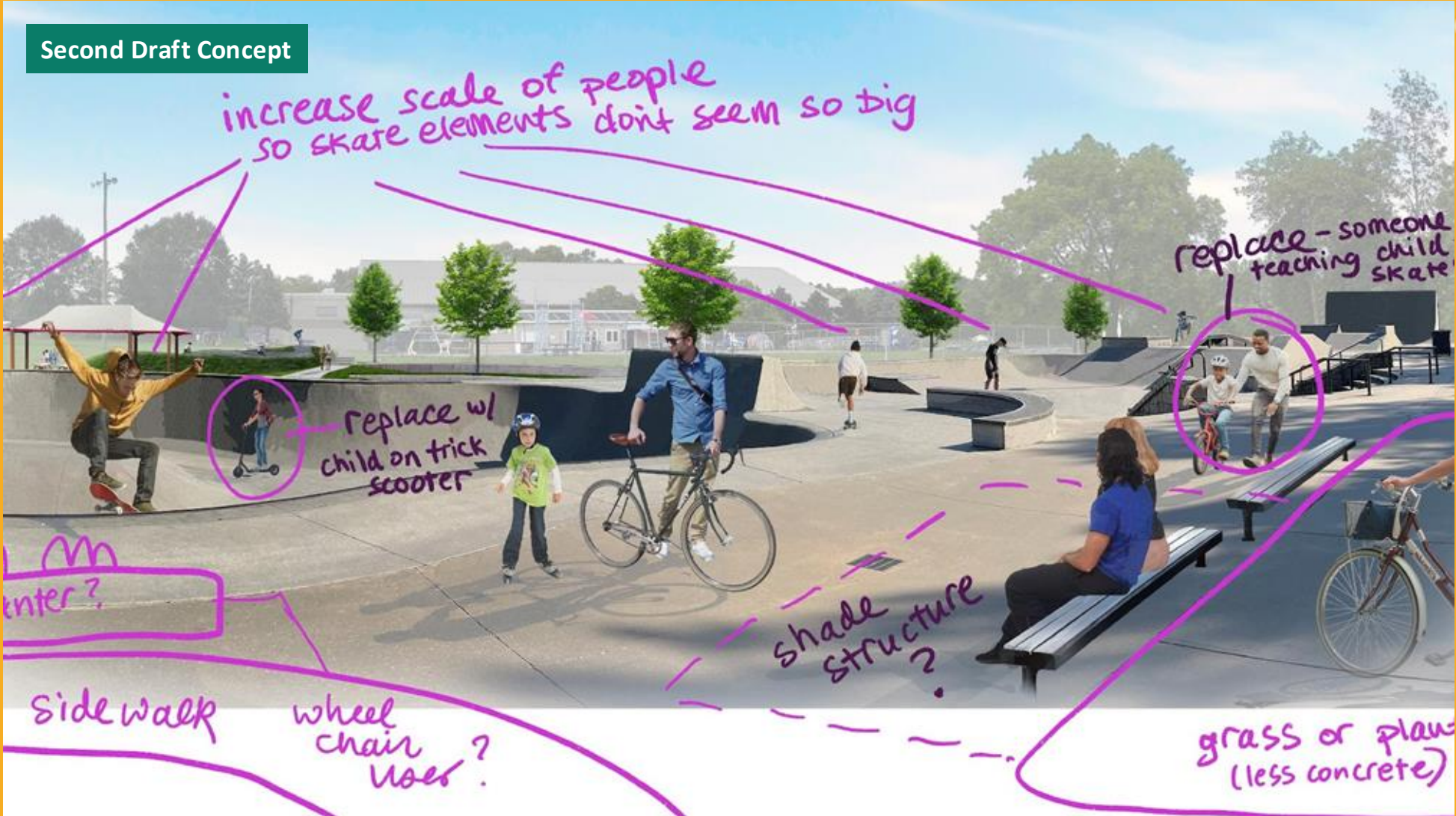
Vermont Healthy Communities Project

First Draft Concept



Vermont Healthy Communities Project

Second Draft Concept



Vermont Healthy Communities Project

Final Draft Concept



Complete Streets & CPTED: Naaman Williams Park



Complete Streets & CPTED: Naaman Williams Park







What I Want You To Remember

- 1 Start with lived experience, not just standards.**
- 2 Bring the right disciplines into the same route.**
- 3 Treat observations as public health evidence.**
- 4 Connect findings to decisions, budgets, and accountability.**



What I Want You To Remember

Closing question:

What would your community see differently if the people most impacted by poor design helped evaluate the route?



Reflections on Webinar Series and Inclusion

Syreeta Nolan

Mike Beers

Q&A

Syreeta Nolan

Mike Beers

Thank you!



Survey Here