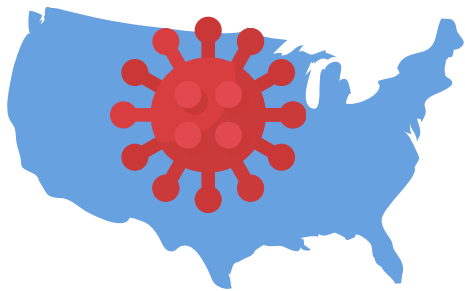




266,000+ Deaths from COVID-19*



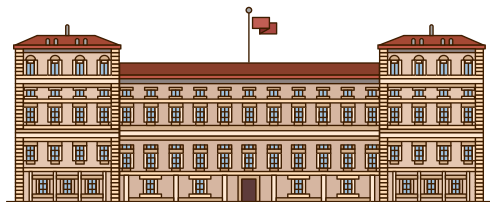
*As of November 30, 2020

Marginalized communities are most impacted:

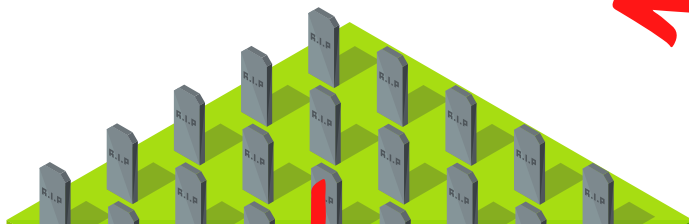
Black, Indigenous, People of Color, Disabled people, and older adults.



Especially people in institutional settings, such as nursing facilities, group homes, and prisons.



Over 101,000+ people who live or work in nursing facilities have died. (NYTimes)



Despite only being .6% of the population, they make up

39% deaths from COVID-19*

*As of Nov. 30, NYTimes

Additionally, across the nation, thousands of group homes, psychiatric facilities, jails, and prisons have had COVID-19 outbreaks and deaths.



Due to lack of reporting standards and requirements:

We will never know how many institutionalized people have inhumanely died from COVID-19.



Institutions pack people in to shared spaces and are "death pits."



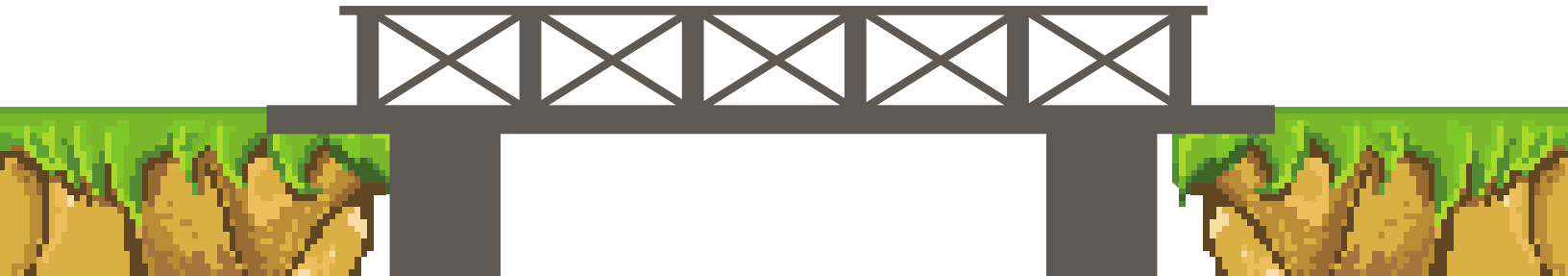


There is a large gap between Disabled people and emergency planners & responders.



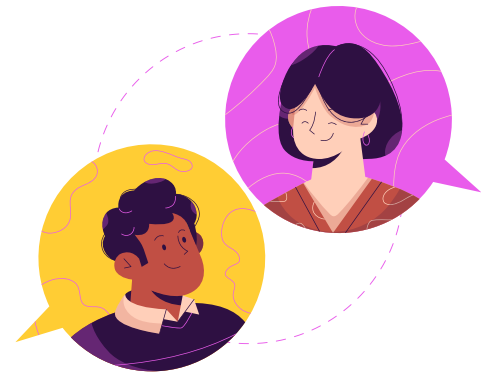
This is especially true for people who live in institutional settings, like nursing facilities, group homes, & prisons.

The Partnership for Inclusive Disaster Strategies is a disability-led organization that builds bridges between emergency planners and people with disabilities.



One way we do this:

Daily COVID-19 Disability Rights Calls:
At 6pm ET, we bring together disability advocates, policymakers, and emergency planners from across the country.



We know:

Including people with disabilities in disaster planning, response, & recovery **is necessary** to identify and address gaps in the disaster planning and recovery process.



We don't know what 2021 will bring.

But, we do know:

The Partnership will keep fighting for the rights of people with disabilities in disasters.

Thank you for your support!

